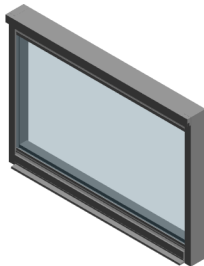


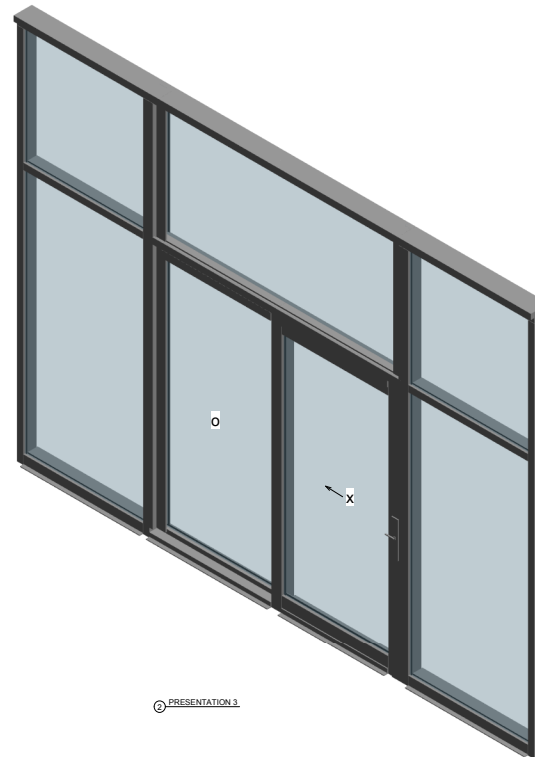
PRESENTATION 1

#### KAWNEER AN ARCONIC COMPANY

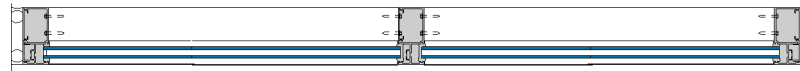
555 Guthridge Ct.  
Technology Park/Atlanta  
Norcross, GA 30092 USA  
Tel: + 1 770 449 5555



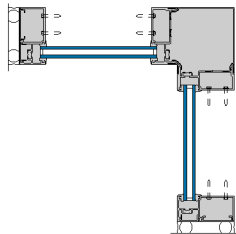
② PRESENTATION 2



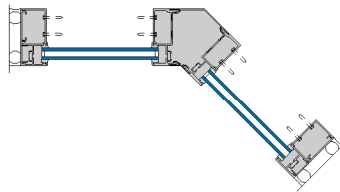
③ PRESENTATION 3



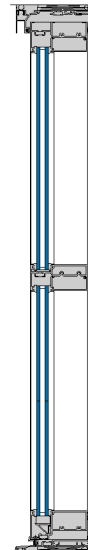
① Basic Wall Example  
3" = 1'-0"



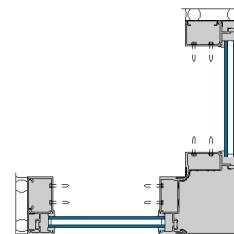
② VERTICAL CORNER 90° - INSIDE  
CORNER  
3" = 1'-0"



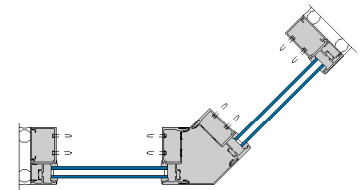
③ VERTICAL CORNER 135° - INSIDE  
CORNER  
3" = 1'-0"



④ SECTION  
3" = 1'-0"



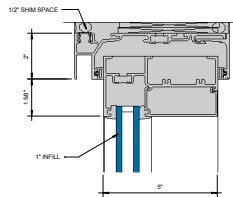
⑤ VERTICAL CORNER 90° - OUTSIDE  
CORNER  
3" = 1'-0"



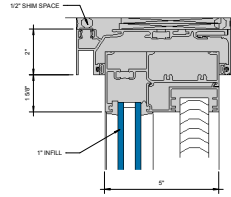
⑥ VERTICAL CORNER 135° - OUTSIDE  
CORNER  
3" = 1'-0"

### KAWNEER AN ARCONIC COMPANY

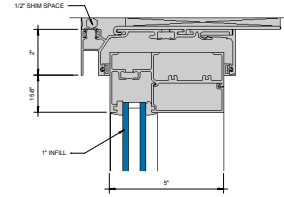
555 Guthridge Ct.  
Technology Park/Atlanta  
Norcross, GA 30092 USA  
Tel: + 1 770 449 5555



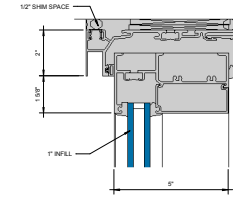
HEAD STD RECEPTOR W/O SLAB  
① COVER  
8" = 1'-0"



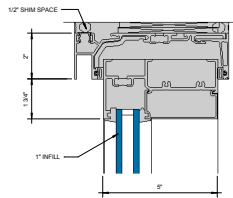
HEAD STD RECEPTOR W/O SLAB  
② COVER W/OPTIONAL BLIND POCKET  
8" = 1'-0"



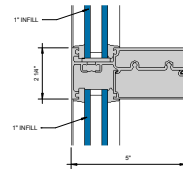
HEAD STD RECEPTOR W/OPTIONAL  
③ STRAP ANCHOR  
8" = 1'-0"



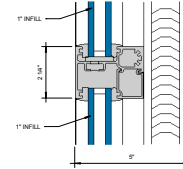
HEAD STD RECEPTOR W/O SLAB  
④ COVER W/OPTIONAL WEDGE GASKET  
8" = 1'-0"



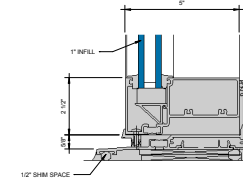
HEAD STD RECEPTOR W/O SLAB  
⑤ COVER W/OPTIONAL WEDGE GASKET  
8" = 1'-0"



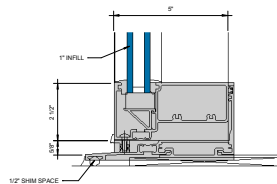
⑥ HORIZONTAL  
8" = 1'-0"



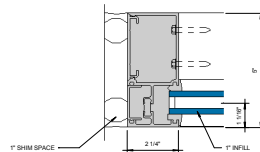
⑦ HORIZONTAL BLIND APPLICATION  
8" = 1'-0"



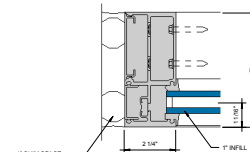
⑧ SILL RECEPTOR W/O SLAB COVER  
8" = 1'-0"



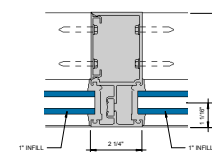
⑨ SILL RECEPTOR W/O SLAB COVER  
8" = 1'-0"



⑩ STD JAMB LEFT HAND  
8" = 1'-0"



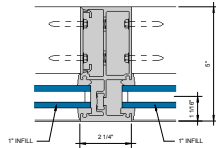
⑪ HEAVYWEIGHT JAMB LEFT HAND  
8" = 1'-0"



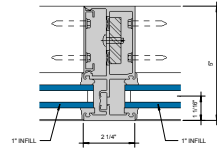
⑫ VERTICAL MULLION  
8" = 1'-0"

### KAWNEER AN ARCONIC COMPANY

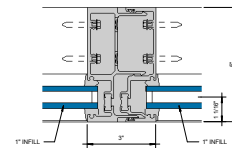
555 Guthridge Ct.  
Technology Park/Atlanta  
Norcross, GA 30092 USA  
Tel: +1 770 449 5555



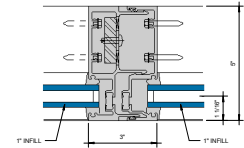
① VERTICAL HEAVY MULLION  
5" = 1'-0"



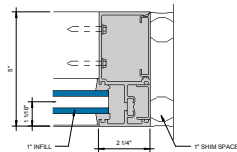
② STEEL REINFORCING HEAVY MULLION  
5" = 1'-0"



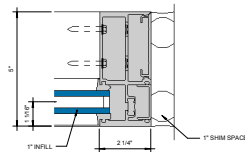
③ EXPANSION MULLION  
5" = 1'-0"



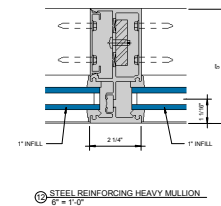
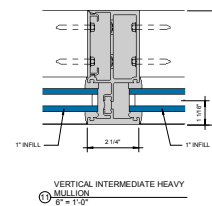
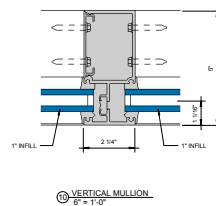
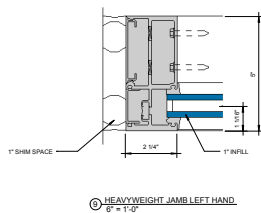
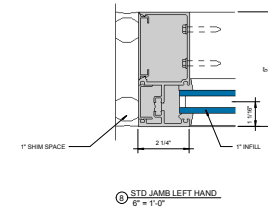
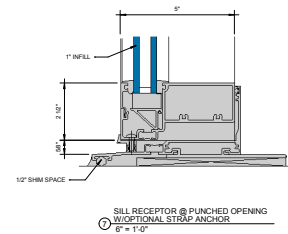
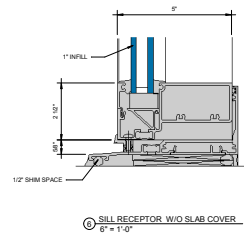
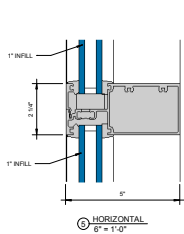
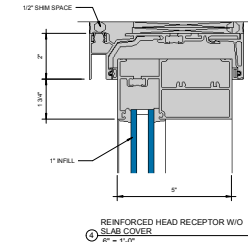
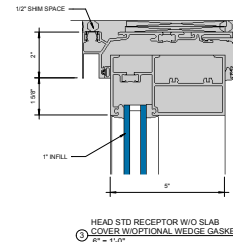
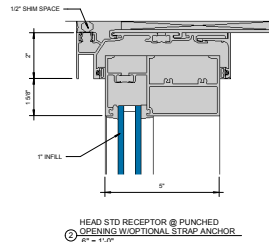
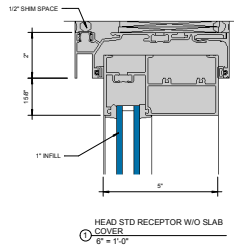
④ STEEL REINFORCING EXPANSION MULLION  
5" = 1'-0"



⑤ STD JAMB RIGHT HAND  
5" = 1'-0"

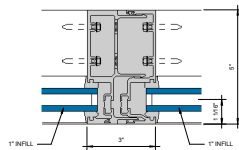


⑥ HEAVYWEIGHT JAMB RIGHT HAND  
5" = 1'-0"

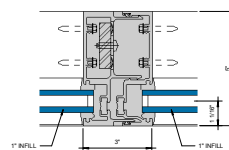


### KAWNEER AN ARCONIC COMPANY

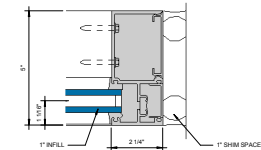
555 Guthridge Ct.  
Technology Park/Atlanta  
Norcross, GA 30092 USA  
Tel: +1 770 449 5555



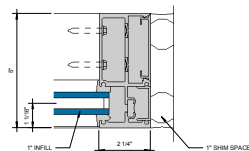
① EXPANSION MULLION  
B' = 1'-0"



② STEEL REINFORCING EXPANSION MULLION  
B' = 1'-0"



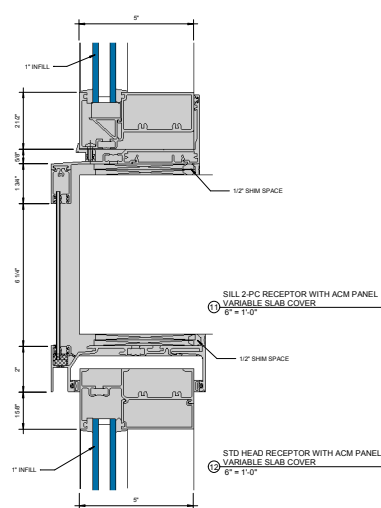
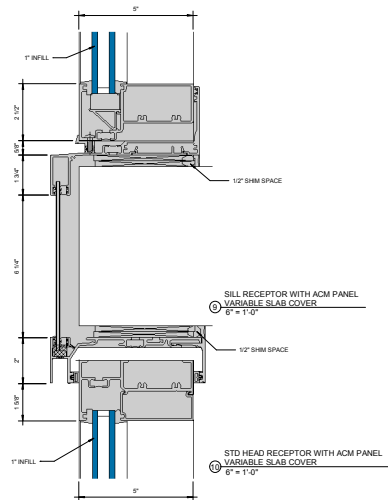
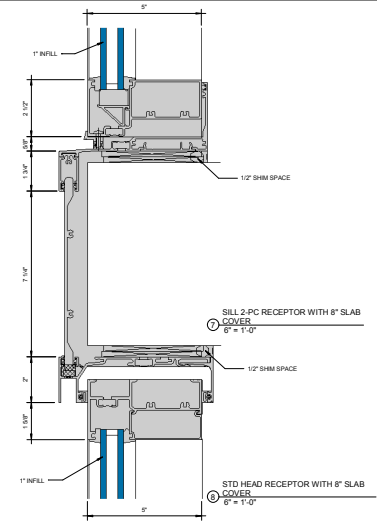
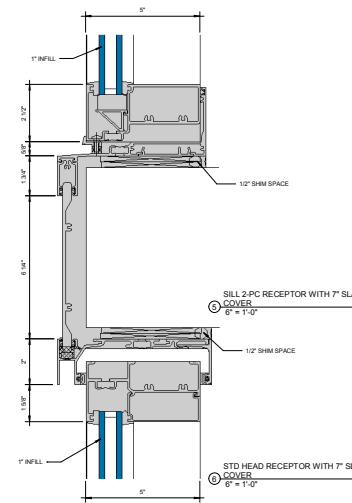
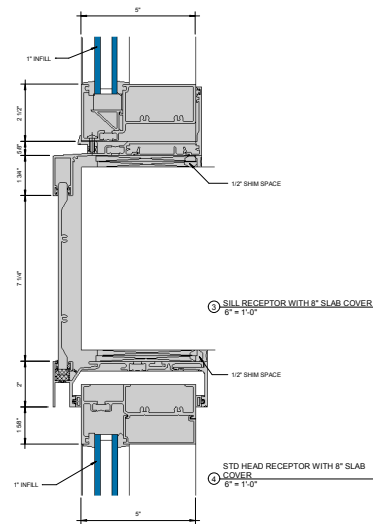
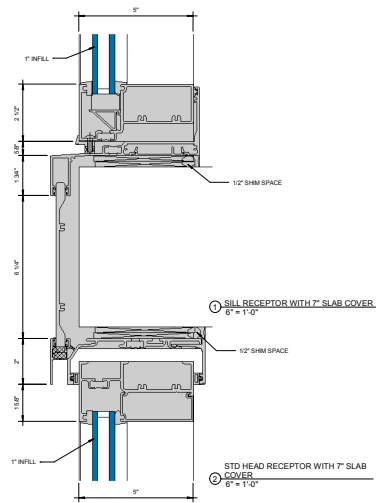
③ STD JAMB RIGHT HAND  
B' = 1'-0"



④ HEAVYWEIGHT JAMB RIGHT HAND  
B' = 1'-0"

### KAWNEER AN ARCONIC COMPANY

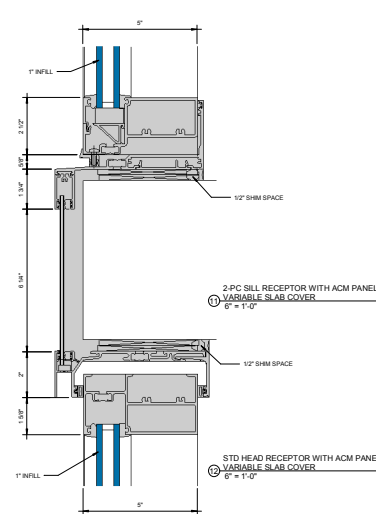
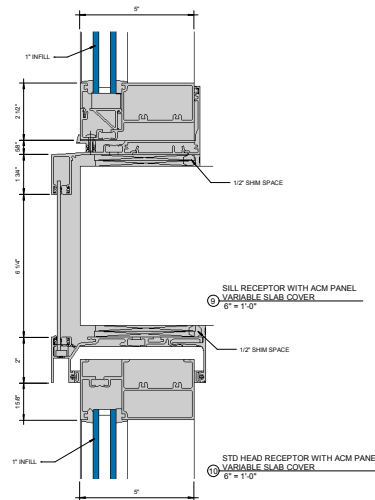
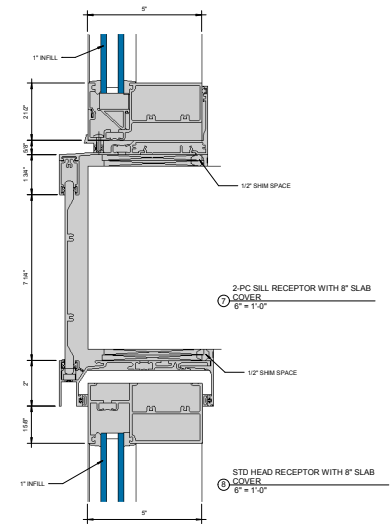
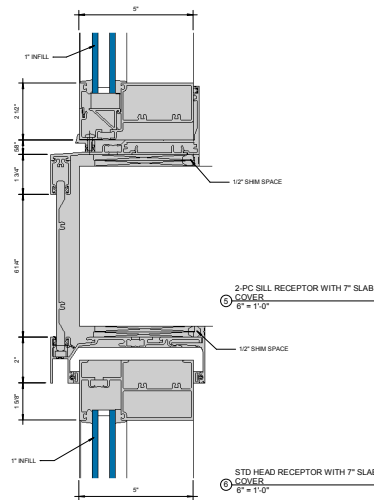
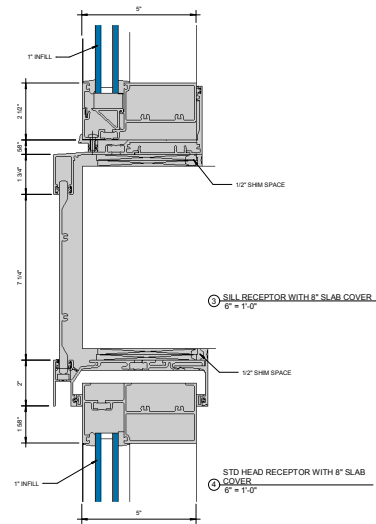
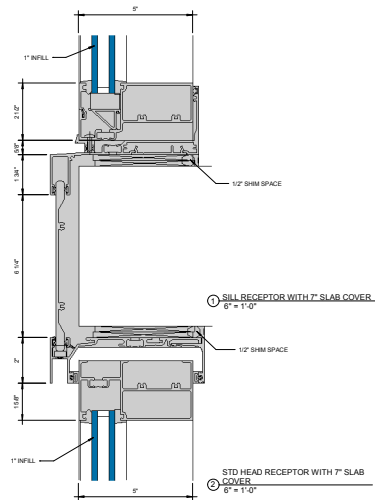
555 Guthridge Ct.  
Technology Park/Atlanta  
Norcross, GA 30092 USA  
Tel: + 1 770 449 5555



### KAWNEER AN ARCONIC COMPANY

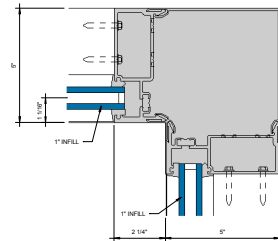
555 Guthridge Ct.  
Technology Park/Atlanta  
Norcross, GA 30092 USA  
Tel: +1 770 449 5555



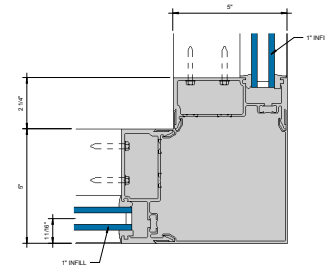


### KAWNEER AN ARCONIC COMPANY

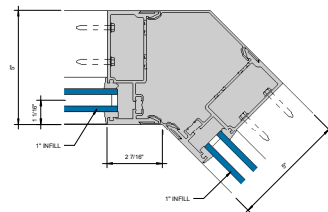
555 Guthridge Ct.  
Technology Park/Atlanta  
Norcross, GA 30092 USA  
Tel: +1 770 449 5555



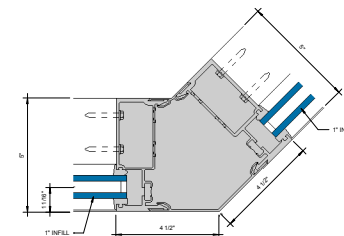
VERTICAL CORNER 90° - INSIDE  
CORNER  
①  
6" x 1'-0"



VERTICAL CORNER 90° - OUTSIDE  
CORNER  
②  
6" x 1'-0"



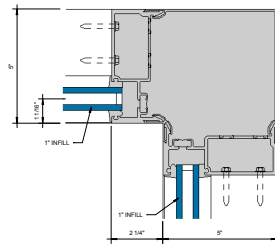
VERTICAL CORNER 135° - INSIDE  
CORNER  
③  
6" x 1'-0"



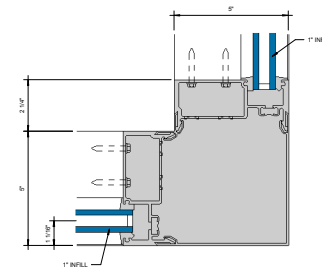
VERTICAL CORNER 135° - OUTSIDE  
CORNER  
④  
6" x 1'-0"

### KAWNEER AN ARCONIC COMPANY

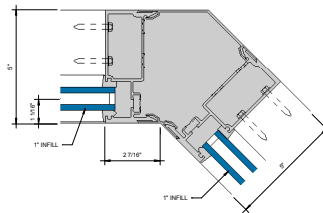
555 Guthridge Ct.  
Technology Park/Atlanta  
Norcross, GA 30092 USA  
Tel: + 1 770 449 5555



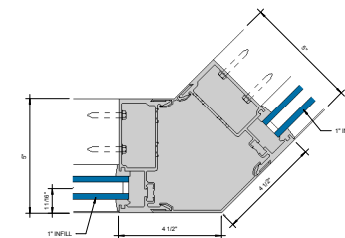
VERTICAL CORNER 90° - INSIDE  
CORNER  
①  
6' = 1'-0"



VERTICAL CORNER 90° - OUTSIDE  
CORNER  
②  
6' = 1'-0"



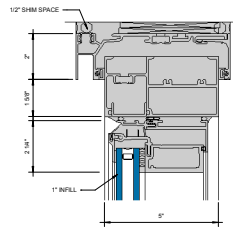
VERTICAL CORNER 135° - INSIDE  
CORNER  
③  
6' = 1'-0"



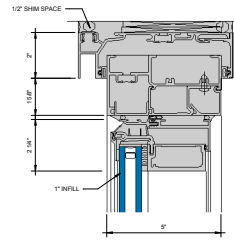
VERTICAL CORNER 135° - OUTSIDE  
CORNER  
④  
6' = 1'-0"

### KAWNEER AN ARCONIC COMPANY

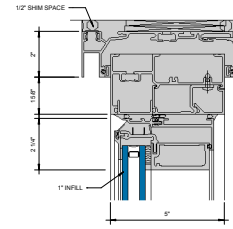
555 Guthridge Ct.  
Technology Park/Atlanta  
Norcross, GA 30092 USA  
Tel: + 1 770 449 5555



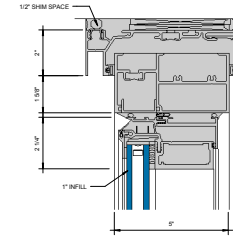
① HEAD PO  
6" = 1'-0"



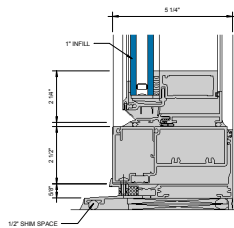
② HEAD COS  
6" = 1'-0"



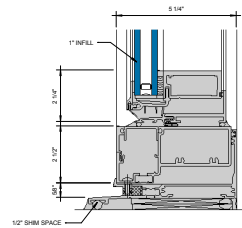
③ HEAD PO  
6" = 1'-0"



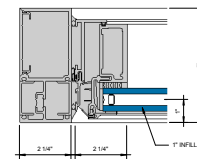
④ HEAD COS  
6" = 1'-0"



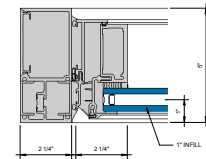
⑤ SILL PO/COS  
6" = 1'-0"



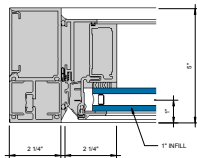
⑥ SILL PO/COS  
6" = 1'-0"



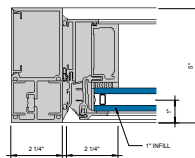
⑦ JAMB PO  
6" = 1'-0"



⑧ JAMB COS  
6" = 1'-0"



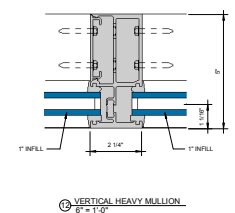
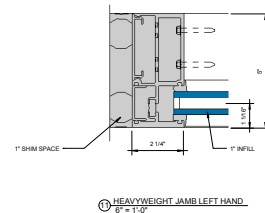
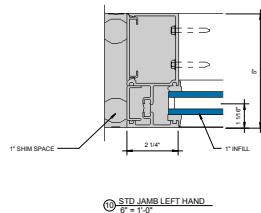
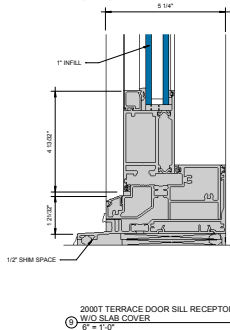
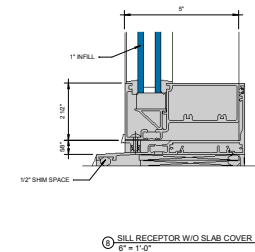
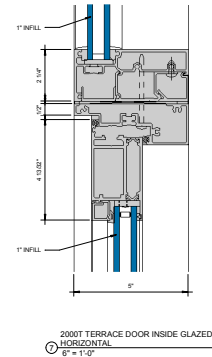
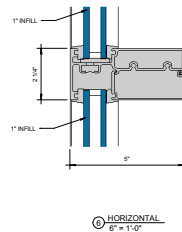
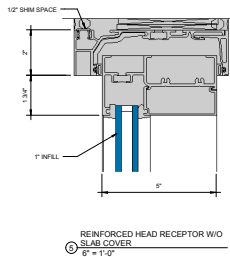
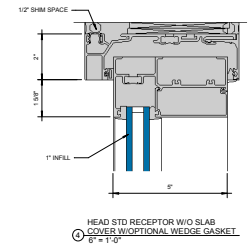
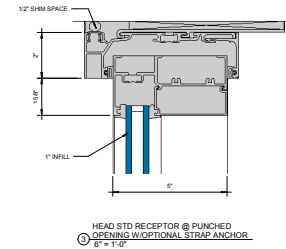
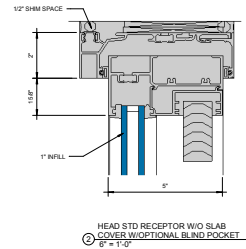
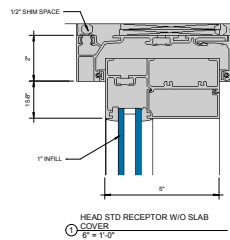
⑨ JAMB PO  
6" = 1'-0"

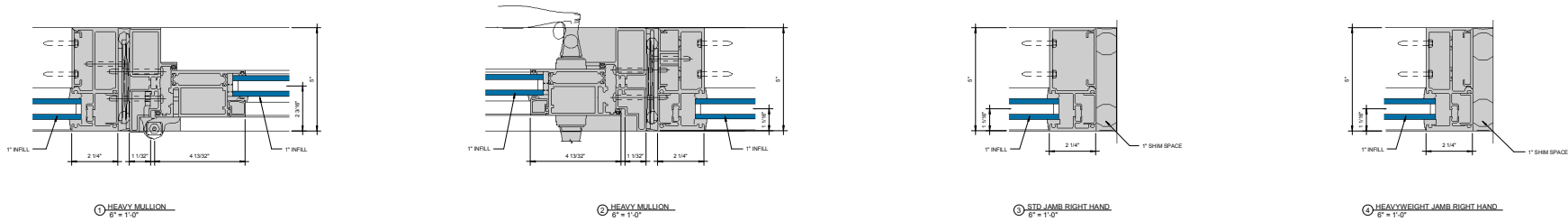


⑩ JAMB COS  
6" = 1'-0"

### KAWNEER AN ARCONIC COMPANY

555 Guthridge Ct.  
Technology Park/Atlanta  
Norcross, GA 30092 USA  
Tel: + 1 770 449 5555

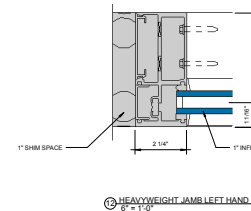
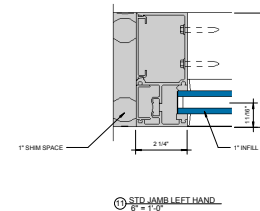
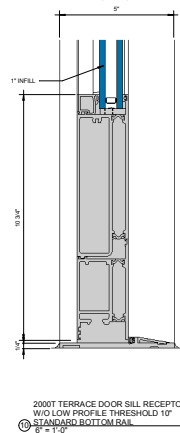
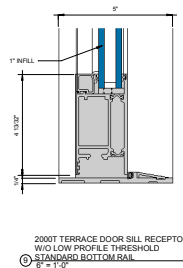
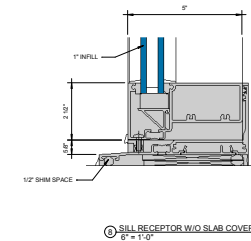
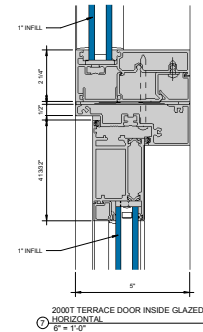
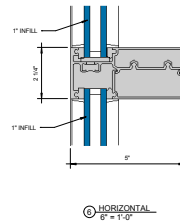
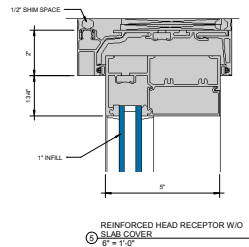
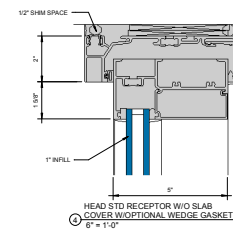
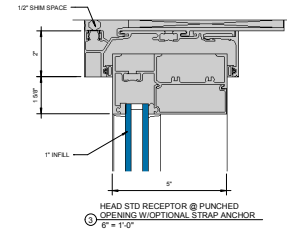
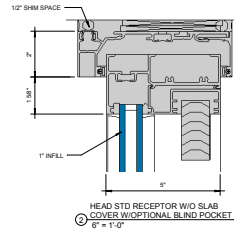
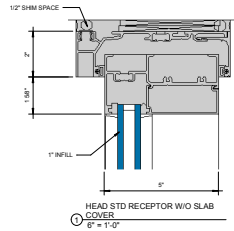




### KAWNEER AN ARCONIC COMPANY

555 Guthridge Ct.  
Technology Park/Atlanta  
Norcross, GA 30092 USA  
Tel: + 1 770 449 5555

## MetroView® FG 501T Window Wall- W/ 2000T Terrace Door Outswing Low Profile Threshold Inside Glazed 1" Infill- Typical Framing Details

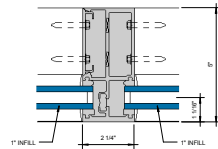


### KAWNEER AN ARCONIC COMPANY

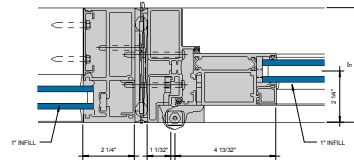
555 Guthridge Ct.  
Technology Park/Atlanta  
Norcross, GA 30092 USA  
Tel: +1 770 449 5555

# Kawneer

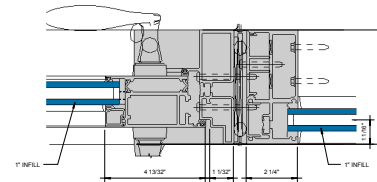
## MetroView® FG 501T Window Wall- W/ 2000T Terrace Door Outswing Low Profile Threshold Inside Glazed 1" Infill- Typical Framing Details



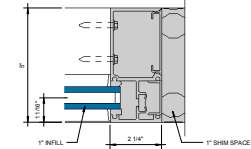
① VERTICAL HEAVY MULLION  
6" = 1'-0"



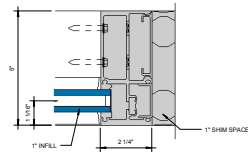
② HEAVY MULLION  
6" = 1'-0"



③ HEAVY MULLION  
6" = 1'-0"



④ STD JAMB RIGHT HAND  
6" = 1'-0"



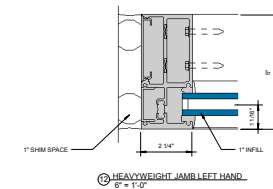
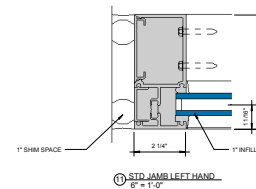
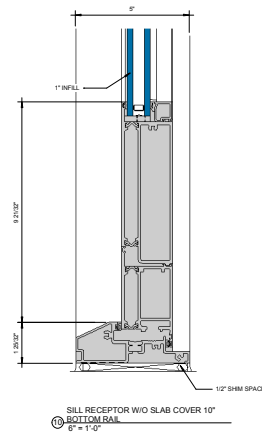
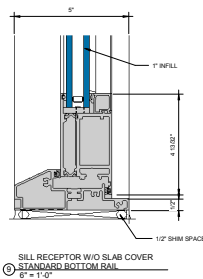
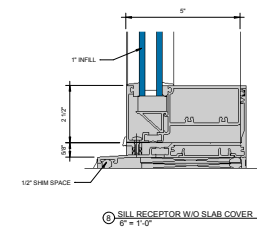
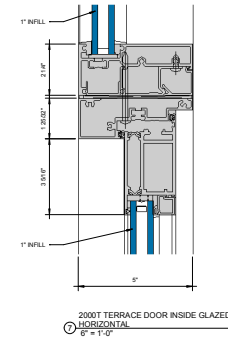
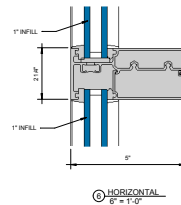
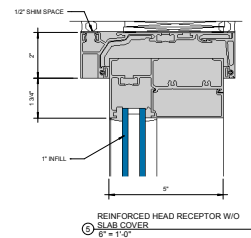
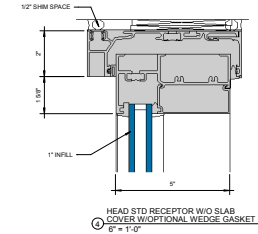
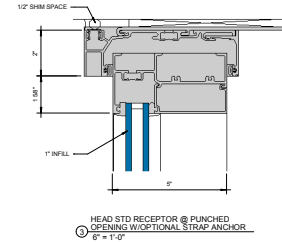
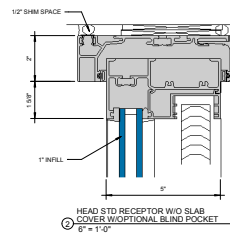
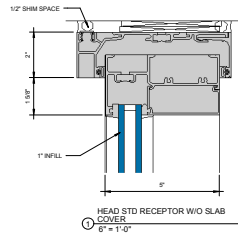
⑤ HEAVYWEIGHT JAMB RIGHT HAND  
6" = 1'-0"

### KAWNEER AN ARCONIC COMPANY

555 Guthridge Ct.  
Technology Park/Atlanta  
Norcross, GA 30092 USA  
Tel: + 1 770 449 5555

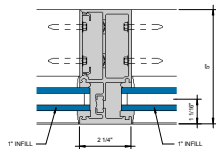
**KAWNEER**  
AN ARCONIC COMPANY



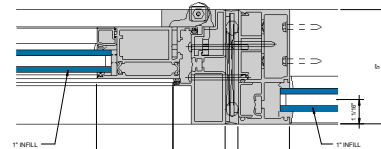


### KAWNEER AN ARCONIC COMPANY

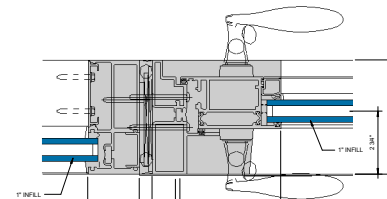
555 Guthridge Ct.  
Technology Park/Atlanta  
Norcross, GA 30092 USA  
Tel: +1 770 449 5555



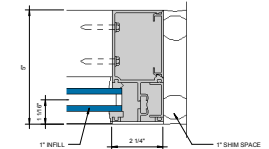
① VERTICAL HEAVY MULLION  
6" = 1'-0"



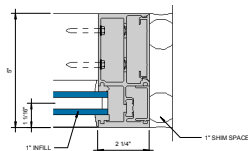
② HEAVY MULLION  
6" = 1'-0"



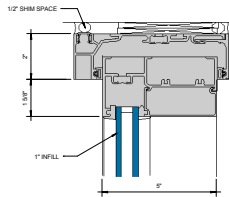
③ HEAVY MULLION  
6" = 1'-0"



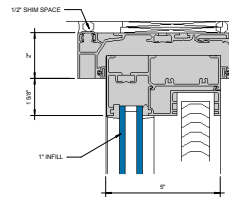
④ STD JAMB RIGHT HAND  
6" = 1'-0"



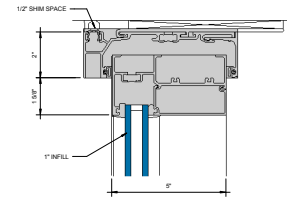
⑤ HEAVYWEIGHT JAMB RIGHT HAND  
6" = 1'-0"



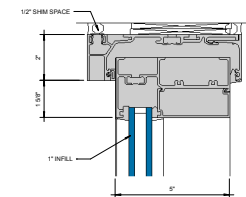
HEAD STD RECEPTOR W/O SLAB COVER  
① 6" = 1'-0"



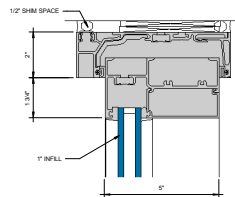
HEAD STD RECEPTOR W/O SLAB COVER W/OPTIONAL BLIND POCKET  
② 6" = 1'-0"



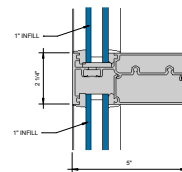
HEAD STD RECEPTOR @ PUNCHED OPENING W/OPTIONAL STRAP ANCHOR  
③ 6" = 1'-0"



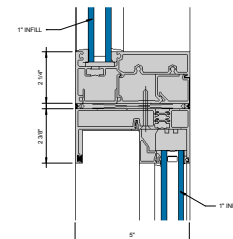
HEAD STD RECEPTOR W/O SLAB COVER W/OPTIONAL WEDGE GASKET  
④ 6" = 1'-0"



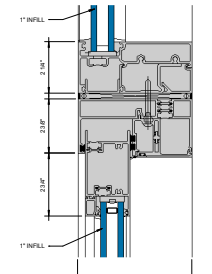
REINFORCED HEAD RECEPTOR W/O SLAB COVER  
⑤ 6" = 1'-0"



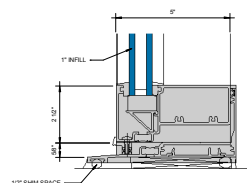
⑥ HORIZONTAL  
6" = 1'-0"



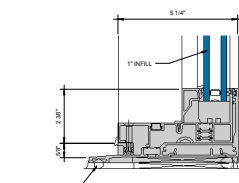
AA3200M THERMAL SLIDING DOOR HORIZONTAL HEAD FIXED PANEL @ HORIZONTAL  
⑦ 6" = 1'-0"



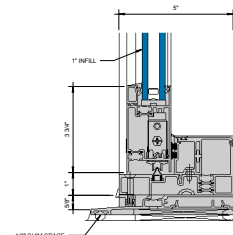
AA3200M THERMAL SLIDING DOOR SLIDING PANEL @ HORIZONTAL  
⑧ 6" = 1'-0"



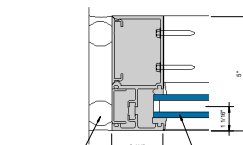
SILL RECEPTOR W/O SLAB COVER  
⑨ 6" = 1'-0"



AA3200M THERMAL SLIDING DOOR SLIDING DOOR HORIZONTAL SILL FIXED PANEL @ SIDELITE  
⑩ 6" = 1'-0"



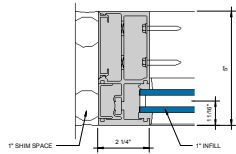
AA3200M THERMAL SLIDING DOOR SLIDING DOOR HORIZONTAL SILL SLIDING PANEL @ SIDELITE  
⑪ 6" = 1'-0"



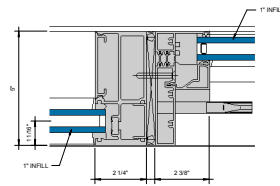
STD JAMB LEFT HAND  
⑫ 6" = 1'-0"

### KAWNEER AN ARCONIC COMPANY

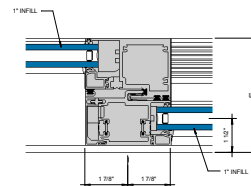
555 Guthridge Ct.  
Technology Park/Atlanta  
Norcross, GA 30092 USA  
Tel: +1 770 449 5555



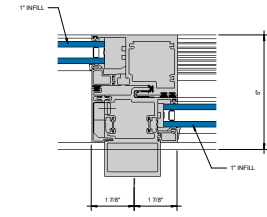
① HEAVYWEIGHT JAMB LEFT HAND  
6" = 1'-0"



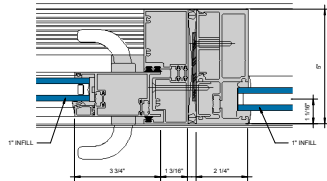
AA3200M THERMAL SLIDING DOOR  
HEAVY MULLION FIXED PANEL @  
VERTICAL  
② 6" = 1'-0"



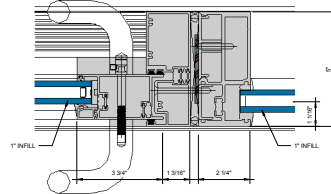
AA3200M THERMAL SLIDING DOOR  
INTERLOCK FIXED SLIDING @  
INTERMEDIATE  
③ 6" = 1'-0"



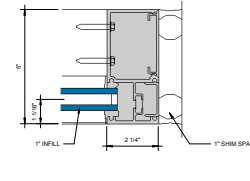
AA3200M THERMAL SLIDING DOOR HW  
INTERLOCK FIXED SLIDING @  
INTERMEDIATE  
④ 6" = 1'-0"



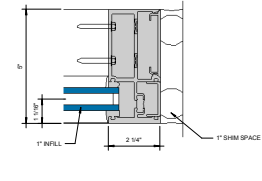
AA3200M THERMAL SLIDING DOOR  
SLIDING PANEL @ INTERMEDIATE  
⑤ W/STD. 1" PULL  
6" = 1'-0"



AA3200M THERMAL SLIDING DOOR  
SLIDING PANEL @ INTERMEDIATE W/  
COIL PULL  
⑥ 6" = 1'-0"



⑦ STD JAMB RIGHT HAND  
6" = 1'-0"



⑧ HEAVYWEIGHT JAMB RIGHT HAND  
6" = 1'-0"